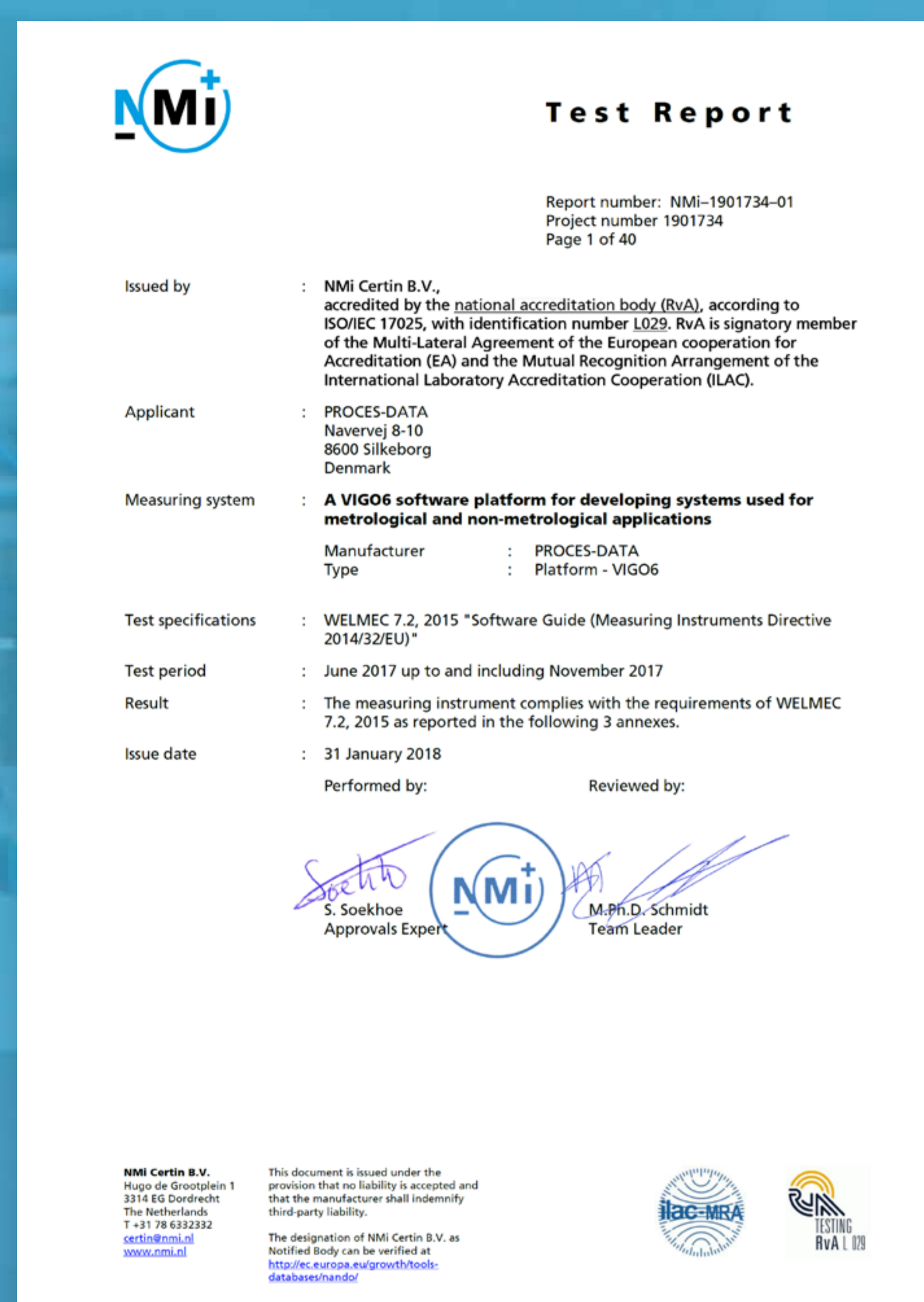


VIG06

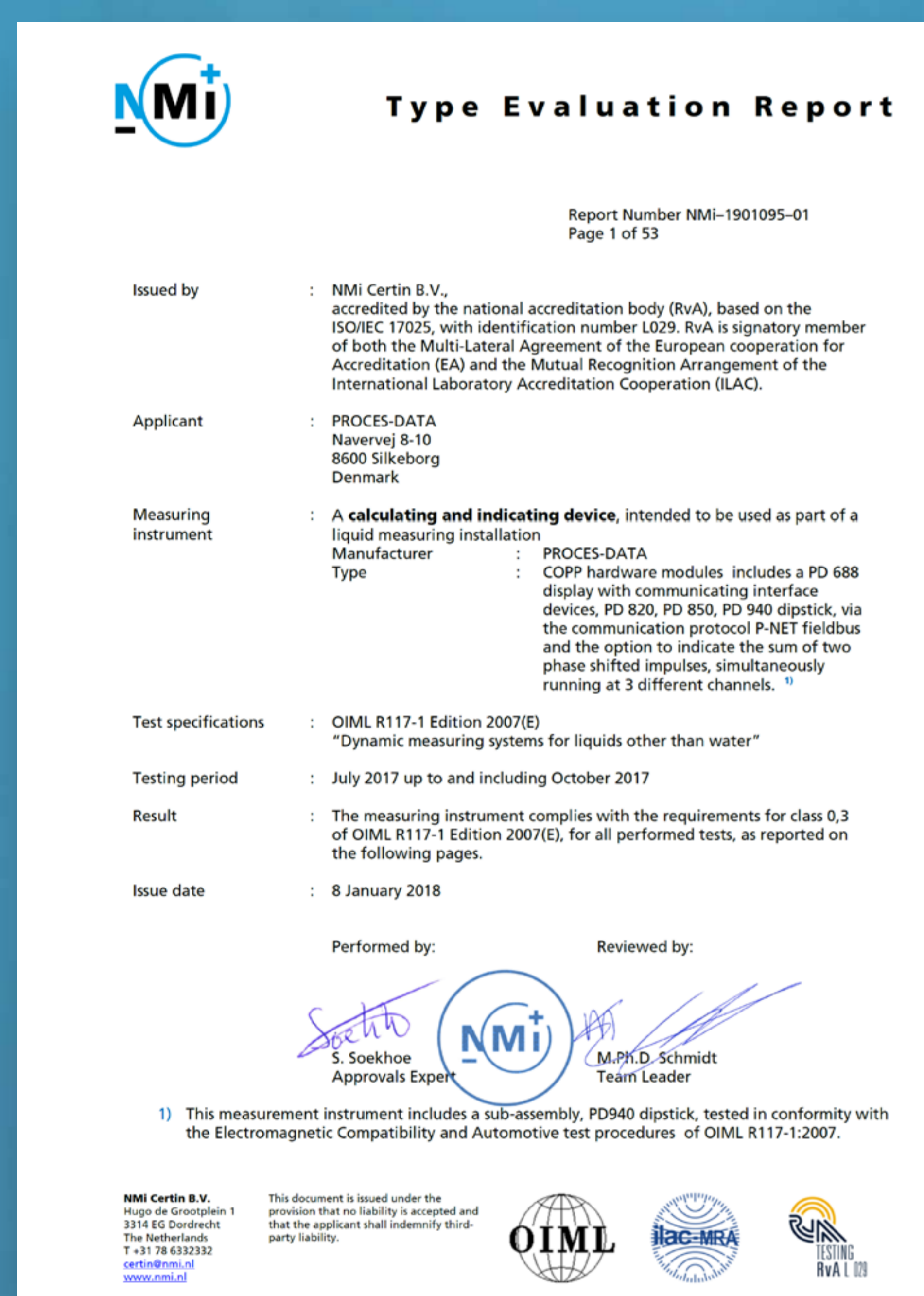
The complete integrated software and hardware suite for Automation Projects

Certified software development environment and hardware platform



WELMEC 7.2 approved software development platform

VIG06 enables you to build software that mixes legal and non-legal elements on the same OIML-approved display unit and I/O modules. A system integrator can tailor the control software to each customer without having to request a new approval.



OIML approved Hardware from PROCES-DATA

The hardware is tested with the extended test for automotive applications, allowing the hardware to be used in cars and trucks.

The legally relevant part(s) of the VIG06 software can reside in any of these approved hardware modules:



Digital I/O
PD 820



Multifunction I/O
PD 850



Display
PD 688



Dipstick
PD 940

Other relevant modules:



Automotive Power Protection
PD 690



P-NET to Light-Link Converter
PD 661



GPS
PD 947



Flow Transmitter
PD 340



PROCES-DATA

VIG06

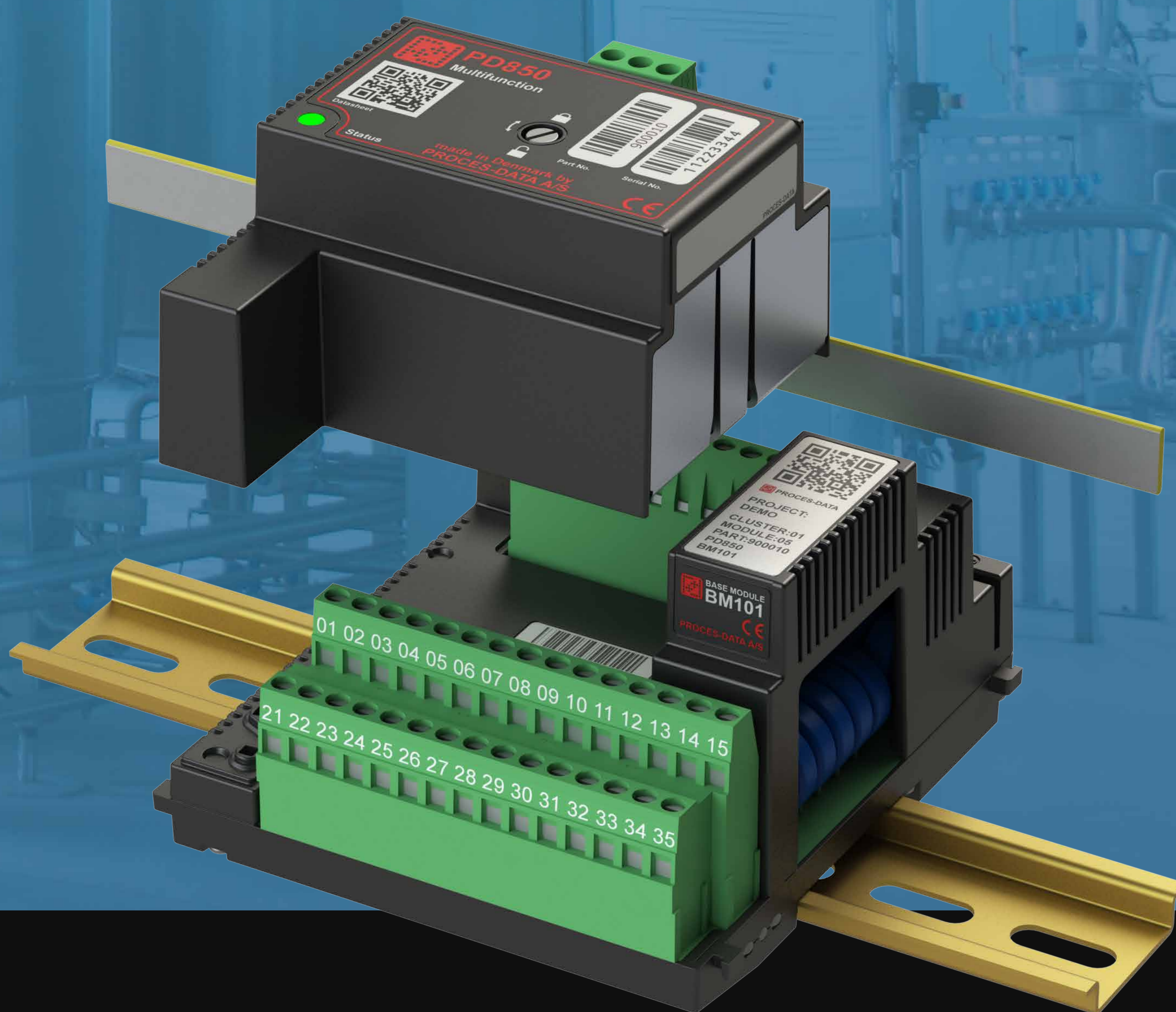
The complete integrated software and hardware suite for Automation Projects

Certified MID software component for measurement of liquids other than water



Features:

- Measurement of flow in liquids
- Indication of legal measured volume
- Interface to different types of flow transmitters/measurements transducers
- Running date and time
- Status indication
- Parameter settings and protection of Weights & Measures parameters against unintended change
- Visualization of the legal relevant configuration data
- Storage on SD-card of alibi reports that provide irrefutable evidence of performed measurements



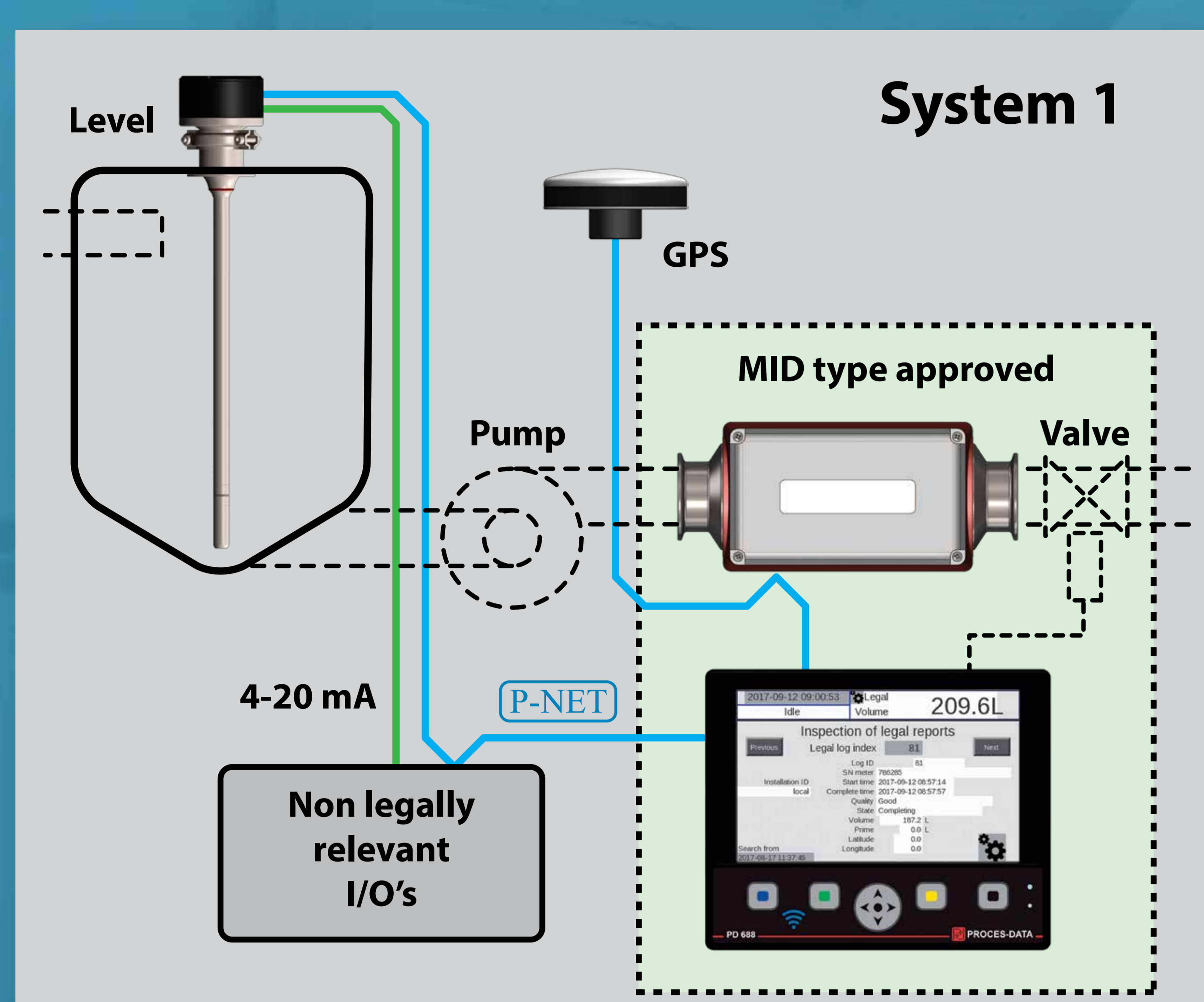
PROCES-DATA

VIG06

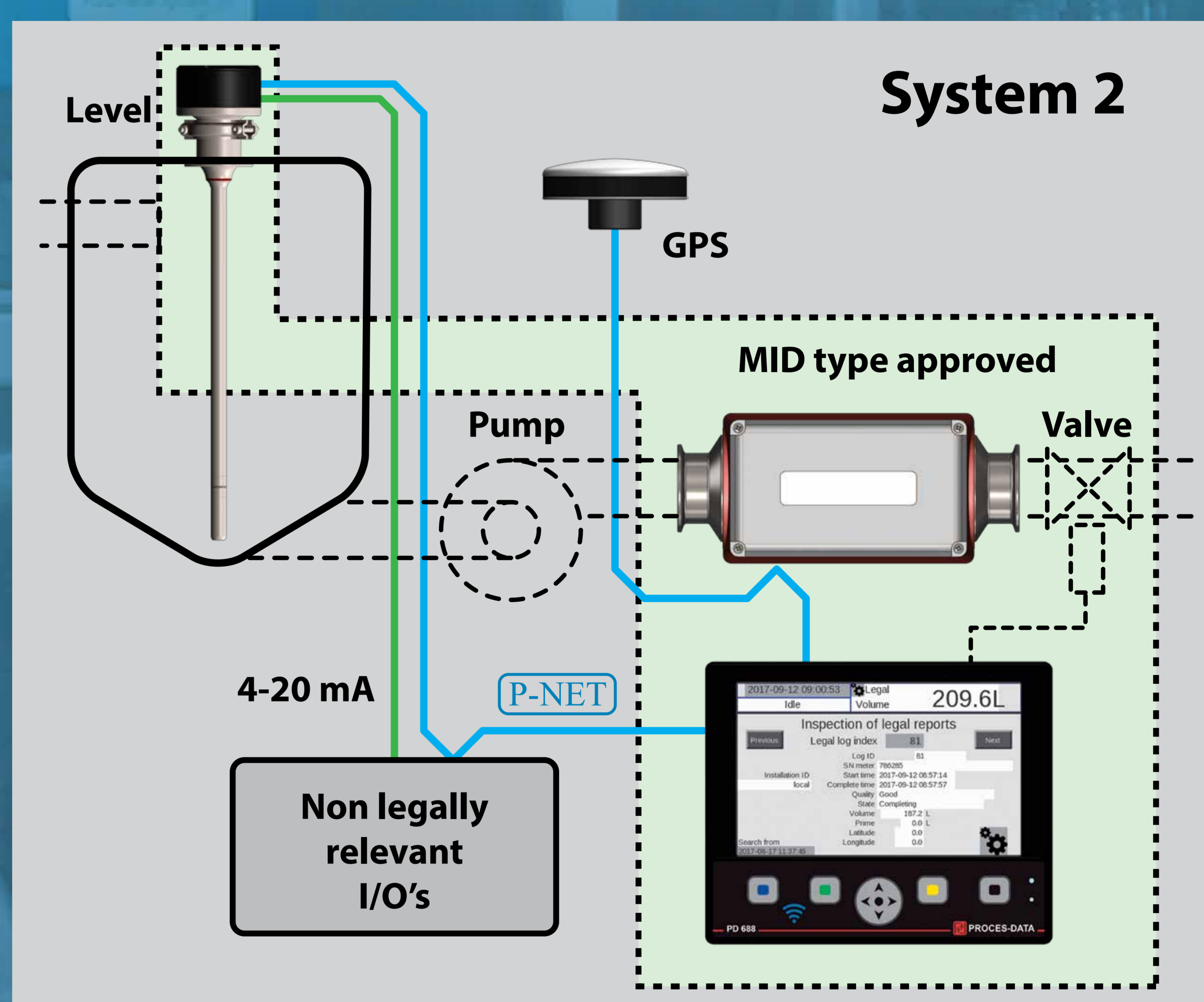
The complete integrated software and hardware suite for Automation Projects

Certified MID software component for measurement of liquids other than water

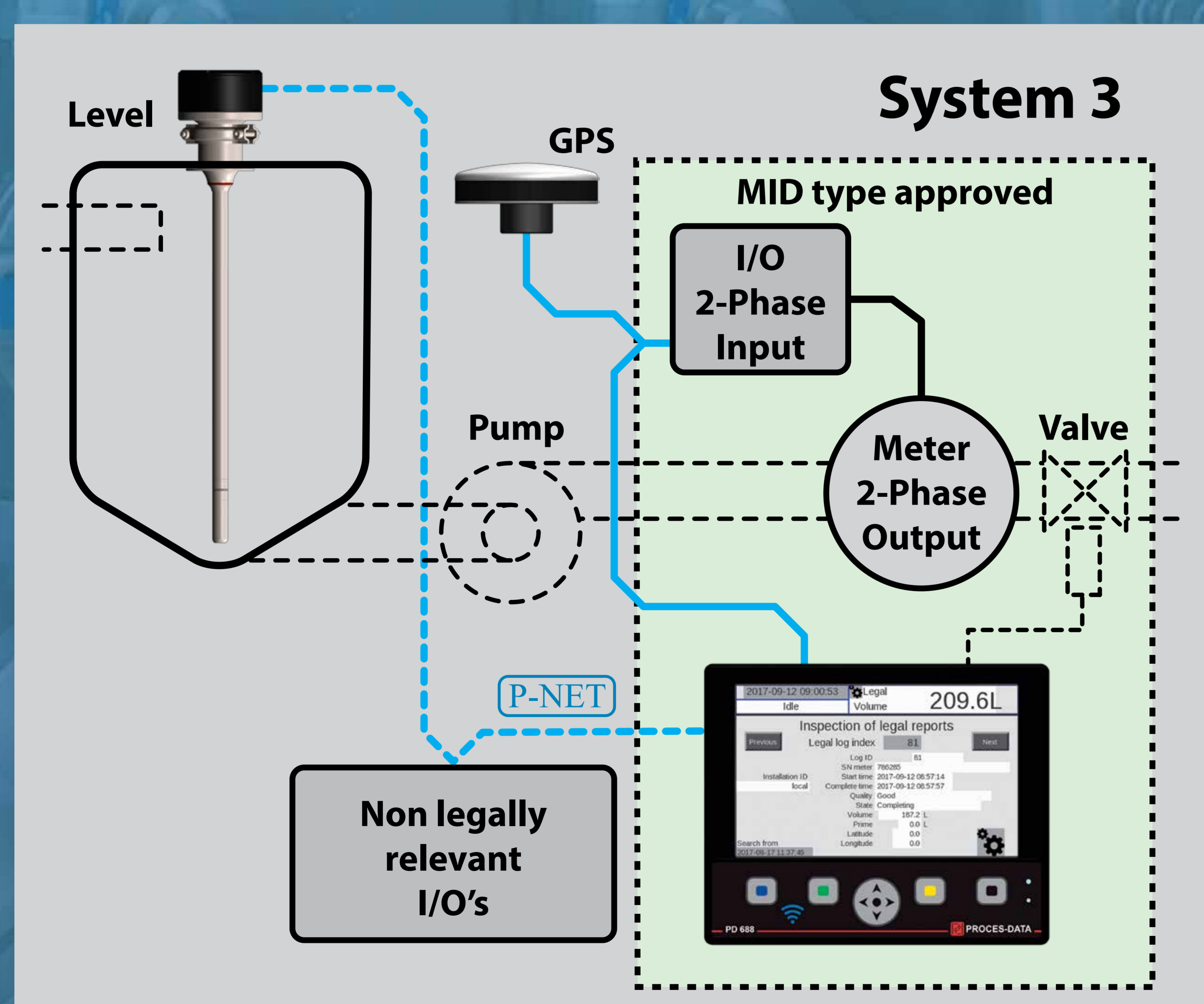
Approved for 3 different configurations:



- System 1:**
- PD 688 Display
 - PD 340 Flow Transmitter



- System 2:**
- PD 688 Display
 - PD 340 Flow Transmitter
 - PD 940 Dipstick



- System 3:**
- PD 688 Display
 - Flow Transmitter with 2-Phase Output



PROCES-DATA

VIGO6

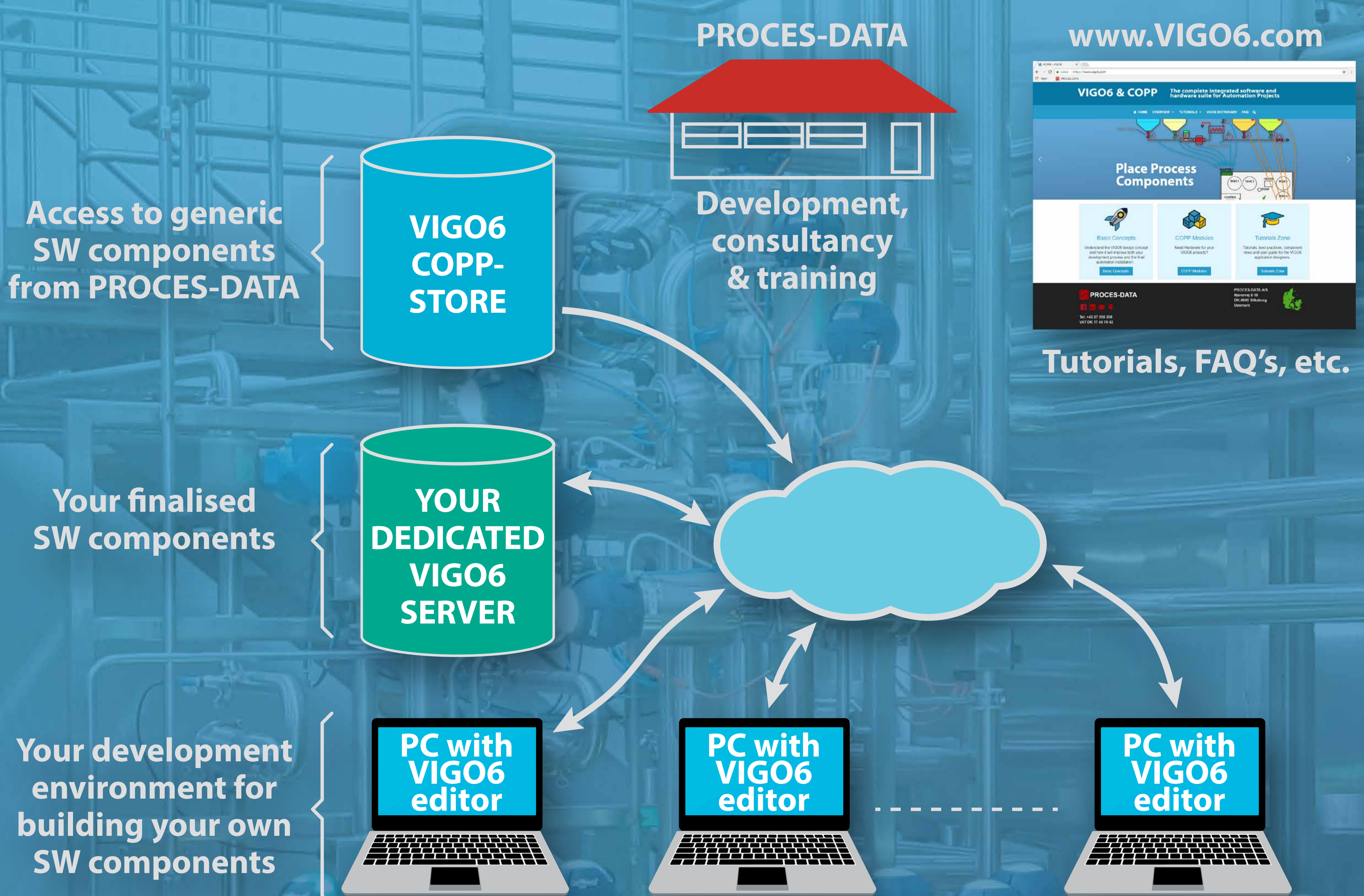
The complete integrated software and hardware suite for Automation Projects

Developing your own MID-approved system

In VIGO6, you design your system by dividing it into building blocks (components), each with a defined and possibly general functionality.

Examples include: Pump-controller, sending of text message, import of customer database, or a simple digital input.

PROCES-DATA offers a suite of such components to use as building blocks free of charge.



Your job:

- Design the overall functionality of the control system (HW and SW)
- Implement the control system software making use of the tested and readymade PROCES-DATA software components to form the overall functionality
- Possibly develop your own components typically by inheriting from an existing PROCES-DATA component. You might even want to seek MID approval on these components, using the Welmec 7.2 approval for the VIGO6 platform as your basis

PROCES-DATA can support you with:

- Establishment and hosting of your dedicated VIGO6 server
- Consultancy on system design on both HW and SW
- Ongoing development of new components in the PROCES-DATA catalogue
- Ongoing improvements of the VIGO6 development environment
- Training in VIGO6
- Consultancy on programming related questions

PROCES-DATA does not offer:

- Development of a complete control system
- Development of components for the exclusive use by one customer



PROCES-DATA